

February 17, 2010

Public Service Commission
Attn: Shauna Benvegna-Springer
P.O. Box 46751
Salt Lake City, UT 84144-6751

Re: Revised Service Area

Ms. Benvegna-Springer:

It has come to our attention that the service area for the Pine Valley Irrigation Company (PVIC) has not been updated on the records of the State of Utah Public Service Commission. We have gone through and created an updated service area that is represented in the attached legal description and exhibit. Essentially, the PVIC service area comprises all private land within the Pine Valley Community.

We have sent a hard copy by mail. Please review and let me know if you have any questions or concerns.

Sincerely



Darren D. Hinton, P.E.
ALPHA ENGINEERING COMPANY

Encl: Legal Description
Service Area Exhibit

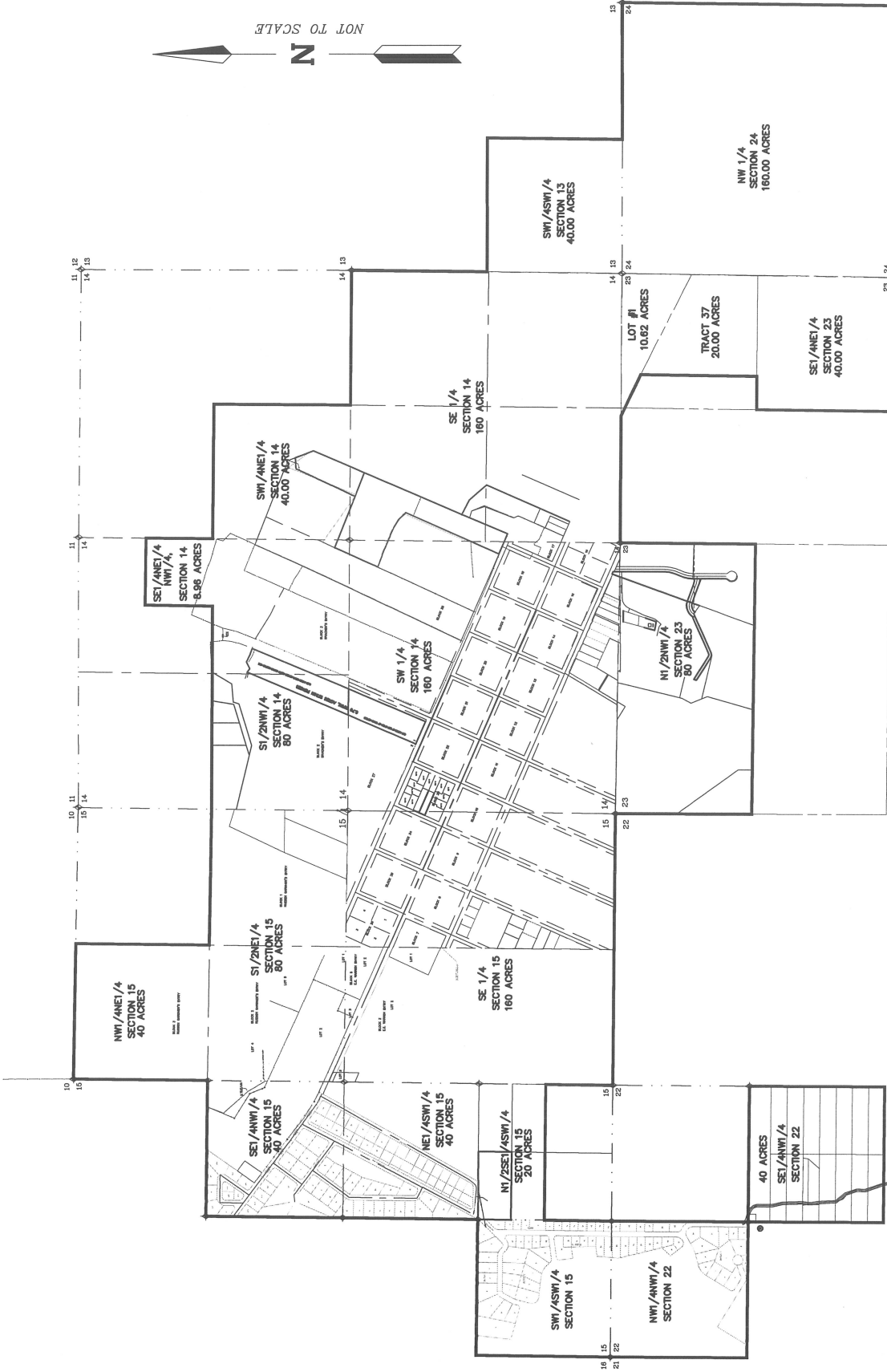
**Pine Valley Irrigation Company
Legal Description of Service Area**

**All of the following Section References are in
Township 39 South, Range 15 West, SLB&M.**

SW ¼ SW ¼ Sec 13	40 acres
SW ¼ Sec 14	160 acres
SE ¼ Sec 14	160 acres
SW ¼ NE Sec 14	40 acres
S ½ NW ¼ Sec 14	80 acres
SE ¼ NE ¼ NW ¼ Sec 14	8.96 acres
SE ¼ Sec 15	160 acres
S ½ NE ¼ Sec 15	80 acres
NW ¼ NE ¼ Sec 15	40 acres
NE ¼ SW ¼ Sec 15	40 acres
SW ¼ SW ¼ Sec 15	40 acres
SE ¼ NW ¼ Sec 15	40 acres
N ½ SE ¼ SW ¼ Sec 15	20 acres
NW ¼ NW ¼ Sec 22	40 acres
SE ¼ NW ¼ Sec 22	40 acres
N ½ NW ¼ Sec 23	80 acres
SE ¼ NE ¼ Sec 23	40 acres
Govt. Tract 37 Sec 23	20 acres
Govt. Lot 1 Sec. 23	10.62 acres
NW ¼ Sec 24	160 acres

Total 1299.58 acres

NOT TO SCALE



PINE VALLEY IRRIGATION
 COMPANY SERVICE AREA
 EXHIBIT



43 SOUTH 100 EAST, ST. GEORGE, UT 84770
 TEL: 435-628-6500 FAX: 435-628-6553

FILE: